



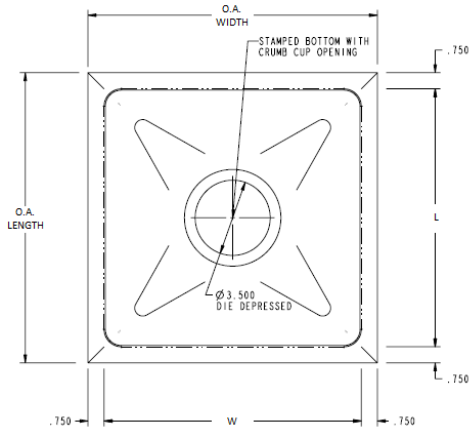
ONE COMPARTMENT UNDERMOUNT SINK

PROJECT#: _____

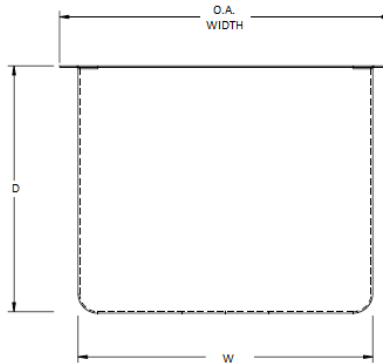
ITEM# _____

MODEL# _____

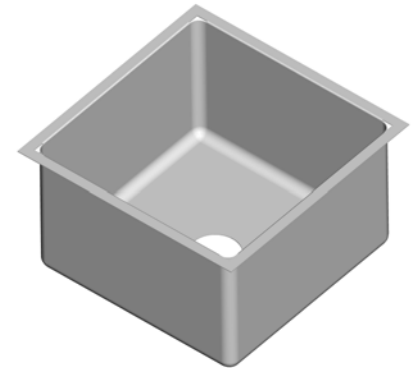
Model #	Bowl Size L x W x D	Model # L x W	Model #	Bowl Size L x W x D	Model # L x W
UM-1-1212-4.5	12" x 12" x 4 1/2"	13 1/2" x 13 1/2"	UM-1-1616-4.5	16" x 16" x 4 1/2"	17 1/2" x 17 1/2"
UM-1-1212-7.5	12" x 12" x 7 1/2"	13 1/2" x 13 1/2"	UM-1-1616-7.5	16" x 16" x 7 1/2"	17 1/2" x 17 1/2"
UM-1-1212-10	12" x 12" x 10"	13 1/2" x 13 1/2"	UM-1-1616-10	16" x 16" x 10"	17 1/2" x 17 1/2"
UM-1-1216-4.5	12" x 16" x 4 1/2"	13 1/2" x 17 1/2"	UM-1-1916-4.5	19" x 16" x 4 1/2"	20 1/2" x 17 1/2"
UM-1-1216-7.5	12" x 16" x 7 1/2"	13 1/2" x 17 1/2"	UM-1-1916-7.5	19" x 16" x 7 1/2"	20 1/2" x 17 1/2"
UM-1-1216-10	12" x 16" x 10"	13 1/2" x 17 1/2"	UM-1-1916-10	19" x 16" x 10"	20 1/2" x 17 1/2"
UM-1-1416-4.5	14" x 16" x 4 1/2"	15 1/2" x 17 1/2"	UM-1-2216-4.5	22" x 16" x 4 1/2"	23 1/2" x 17 1/2"
UM-1-1416-7.5	14" x 16" x 7 1/2"	15 1/2" x 17 1/2"	UM-1-2216-7.5	22" x 16" x 7 1/2"	23 1/2" x 17 1/2"
UM-1-1416-10	14" x 16" x 10"	15 1/2" x 17 1/2"	UM-1-2216-10	22" x 16" x 10"	23 1/2" x 17 1/2"
UM-1-1814-4.5	18" x 14" x 4 1/2"	19 1/2" x 15 1/2"	UM-1-2816-4.5	28" x 16" x 4 1/2"	29 1/2" x 17 1/2"
UM-1-1814-7.5	18" x 14" x 7 1/2"	19 1/2" x 15 1/2"	UM-1-2816-7.5	28" x 16" x 7 1/2"	29 1/2" x 17 1/2"
UM-1-1814-10	18" x 14" x 10"	19 1/2" x 15 1/2"	UM-1-2816-10	28" x 16" x 10"	29 1/2" x 17 1/2"



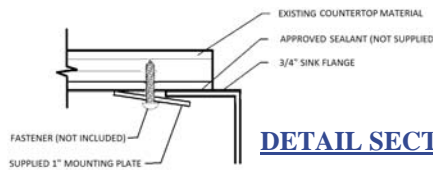
PLAN



ELEVATION



ISOMETRIC VIEW



DETAIL SECTION

Mechanical Specifications

- 16 gauge 304 stainless steel fabrication
- 3 1/2" drain opening with crumb cup drain and basket strainer 1 1/2" IPS
- Fully welded, seamless and polished to #3 commercial finish
 - Horizontal and vertical corners covered to a 3/4" radius
 - Die formed depression to drain in bowl bottom
 - 1" mounting plate
 - NSF listed and labeled

Optional

- 14 gauge 304 stainless steel fabrication available
 - Different bowl sizes and depths
 - Sound deadening to underside of sink bowl
 - ADA options